



InGranite Recon Ltd.

Cast Stone | Modern Material | Classic Style

Cast Stone String Course

Contact

Phone:

Email:

Web:

UK

0808 2349 118

info@ingranite.co.uk

www.ingranite.co.uk

Rep. Irl.

057 9331 462

info@ingranite.ie

www.ingranite.ie





InGranite Recon Ltd.

Cast Stone | Modern Material | Classic Style

Cast Stone String Course

InGranite Recon manufactures a wide range of cast stone string course units in styles to match our range of cast stone window sills. They are all manufactured in beautiful and durable reconstituted granite with plenty of profile designs and widths to choose from. Please contact us if you require a bespoke or modified design for your project.

A Word on Terminology

String course is also often referred to by the term "band course". Feel free to use the terms that you are used to when contacting us. We have been manufacturing for many years, so we'll know what you mean.

Contact

Phone:

Email:

Web:

UK

0808 2349 118

info@ingranite.co.uk

www.ingranite.co.uk

Rep. Irl.

057 9331 462

info@ingranite.ie

www.ingranite.ie



InGranite Recon Ltd.

Reconstituted Stone | Modern Material | Classic Style

UK info@ingranite.co.uk

www.ingranite.co.uk

0808 2349118

RoI info@ingranite.ie

www.ingranite.ie

057 9331462

Technical specification sheet

Title: String course with check out

Date: 01/03/2017

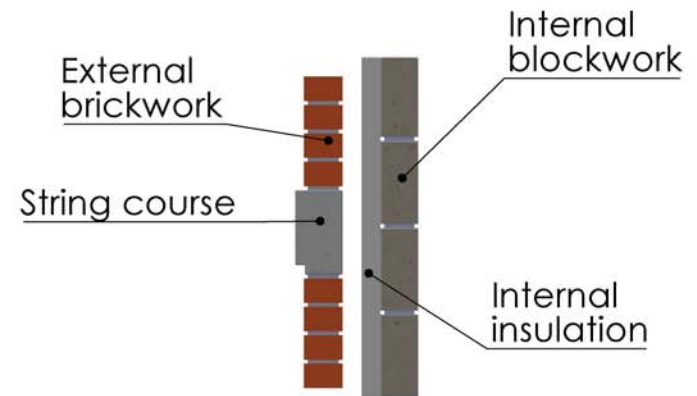
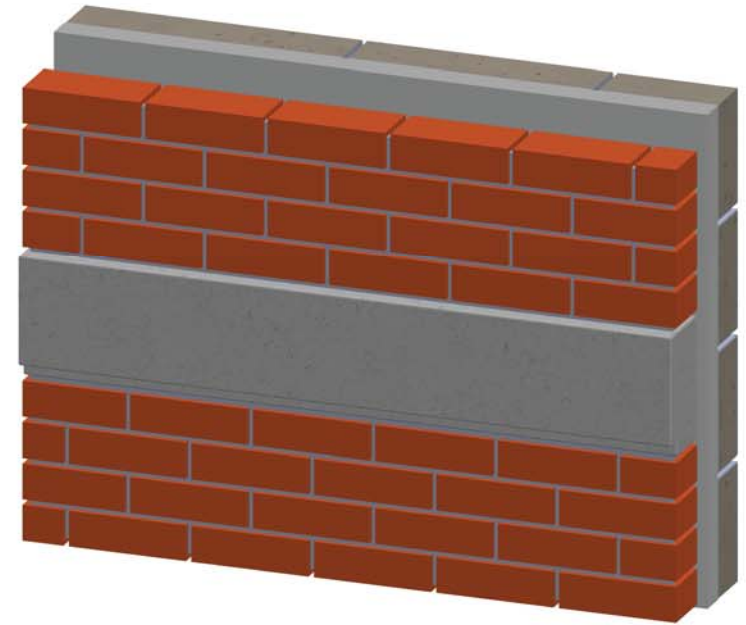
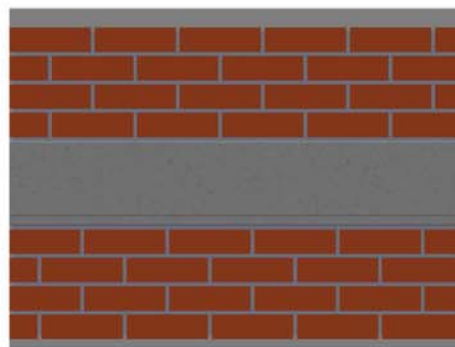
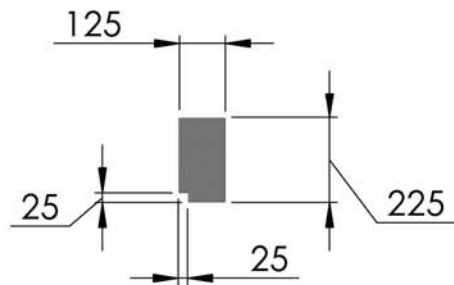
Ref: SCO 1200

Scale: 1:20

Drawn by: InGranite

Approximate weight:

81kgs



All dimensions are in millimetres. For non listed sizes please contact InGranite Recon LTD.

All vertical faces typically have a 4mm taper per 100mm of height.

The information contained in this drawing was correct at the time of going to print. Profiles, sizes and weights are given as indication only.



InGranite Recon Ltd.

Reconstituted Stone | Modern Material | Classic Style

UK info@ingranite.co.uk

RoI info@ingranite.ie

www.ingranite.co.uk

www.ingranite.ie

0808 2349118

057 9331462

Technical specification sheet

Title: Corner string course

Date: 09/02/2017

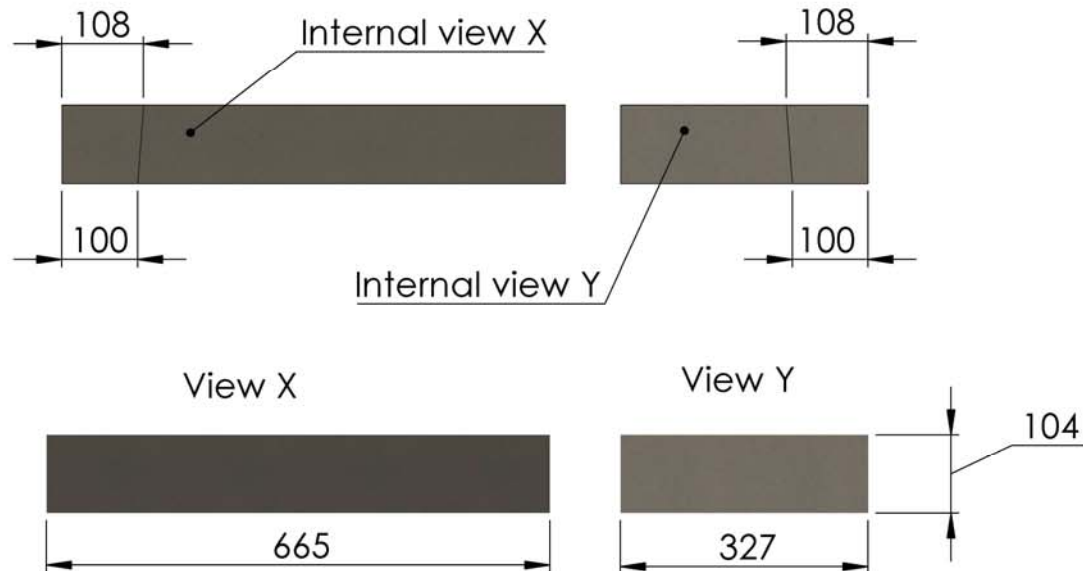
Ref: String course

Scale: 1:10

Drawn by: InGranite

Approximate weight:

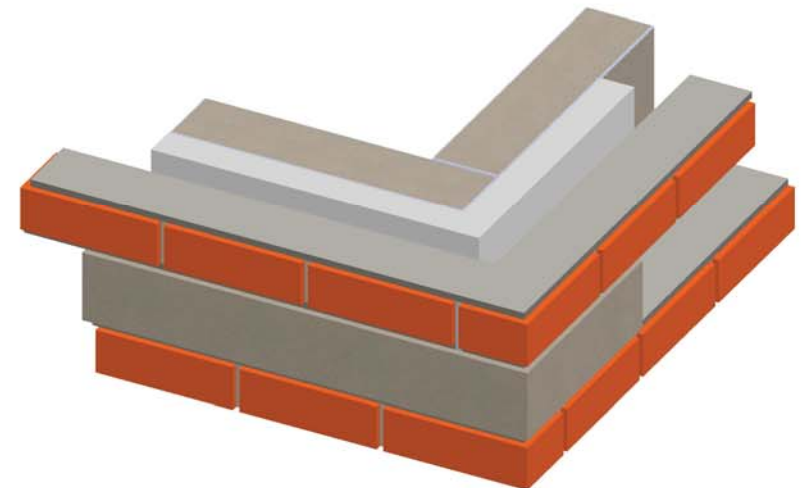
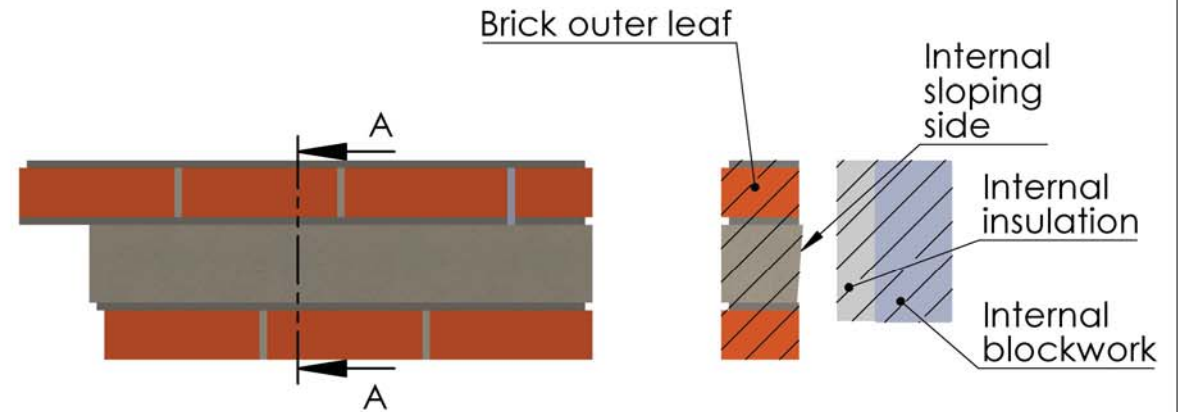
17kgs/meter



All dimensions are in millimetres. For non listed sizes please contact InGranite Recon LTD.

All vertical faces typically have a 4mm taper per 100mm of height.

The information contained in this drawing was correct at the time of going to print. Profiles, sizes and weights are given as indication only.





InGranite Recon Ltd.

Reconstituted Stone | Modern Material | Classic Style

UK info@ingranite.co.uk

RoI info@ingranite.ie

www.ingranite.co.uk

www.ingranite.ie

0808 2349118

057 9331462

Technical specification sheet

Title: Double bull nose string course

Date: 10/04/2017

Ref: DBN....

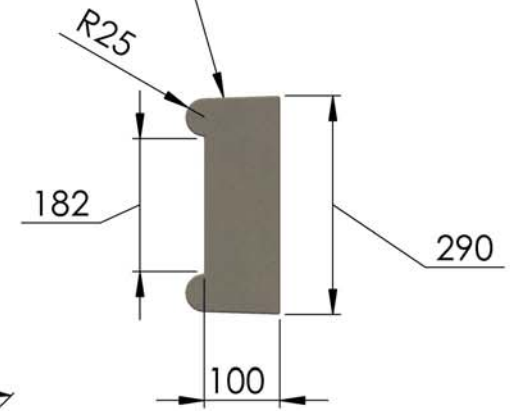
Scale: 1:10

Drawn by: InGranite

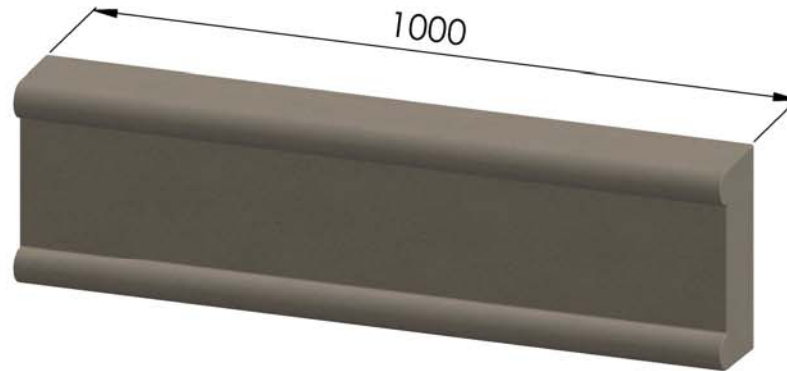
Approximate weight:

70kgs/meter

4mm slope on upper
and lower face



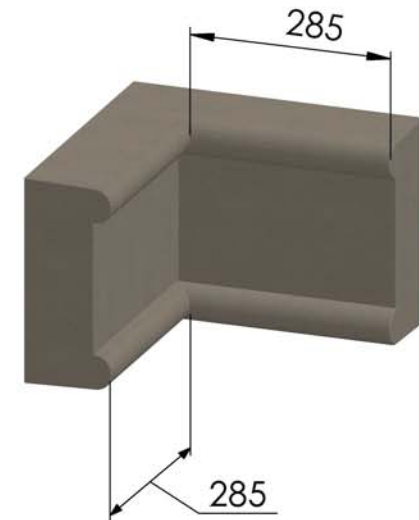
String course profile



External
corner



Internal
corner



All dimensions are in
millimetres. For non listed sizes
please contact
InGranite Recon LTD.

All vertical faces typically have a 4mm taper per 100mm of height.

The information contained in this drawing was correct at the time of going to print. Profiles, sizes and weights are given as indication only.



InGranite Recon Ltd.

Reconstituted Stone | Modern Material | Classic Style

UK info@ingranite.co.uk

www.ingranite.co.uk

0808 2349118

RoI info@ingranite.ie

www.ingranite.ie

057 9331462

Technical specification sheet

Title: Gem string course

Date: 28/02/2017

Ref: GSC1000

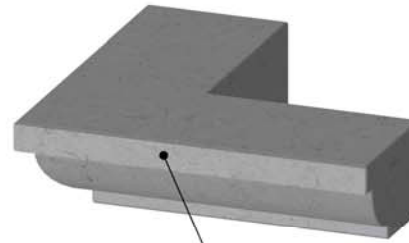
Scale: 1:10

Drawn by: InGranite

Approximate weight:

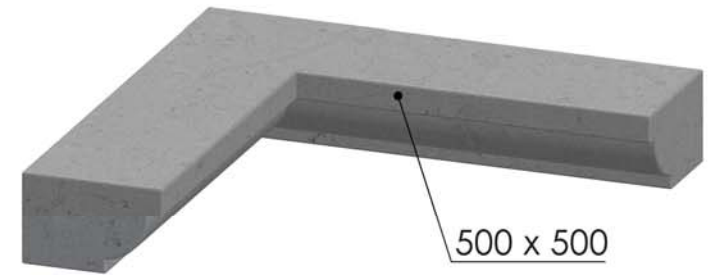
42kgs

External corner

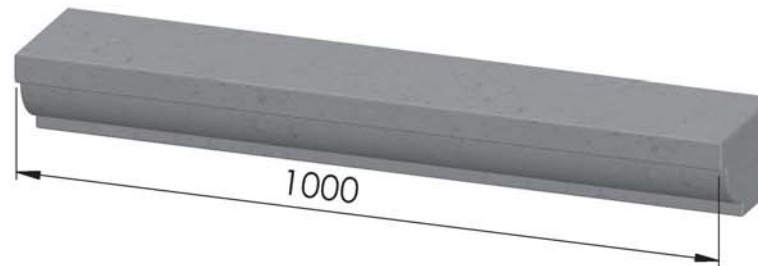


500 x 500

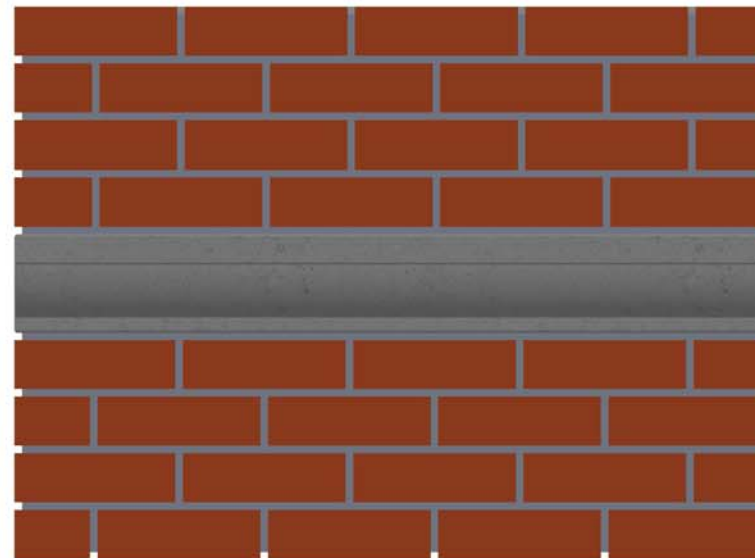
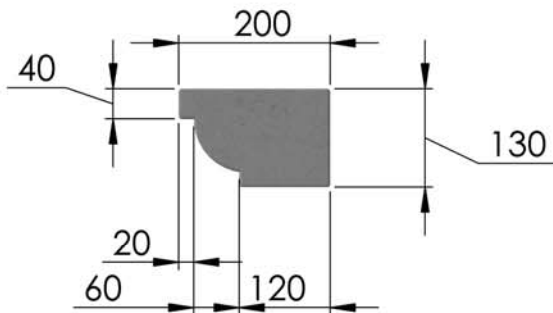
Internal corner



500 x 500



1000



External brickwork

Gem string course

Internal block work

Internal insulation

All dimensions are in millimetres. For non listed sizes please contact InGranite Recon LTD.

All vertical faces typically have a 4mm taper per 100mm of height.

The information contained in this drawing was correct at the time of going to print. Profiles, sizes and weights are given as indication only.



InGranite Recon Ltd.

Reconstituted Stone | Modern Material | Classic Style

UK info@ingranite.co.uk

www.ingranite.co.uk

0808 2349118

RoI info@ingranite.ie

www.ingranite.ie

057 9331462

Technical specification sheet

Title: String course chimney cap

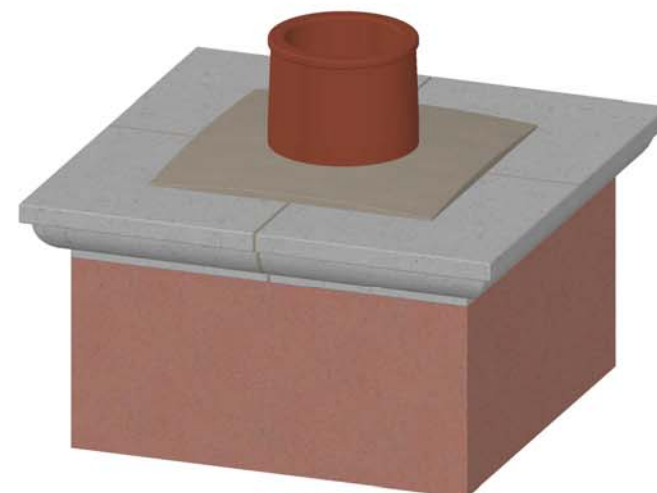
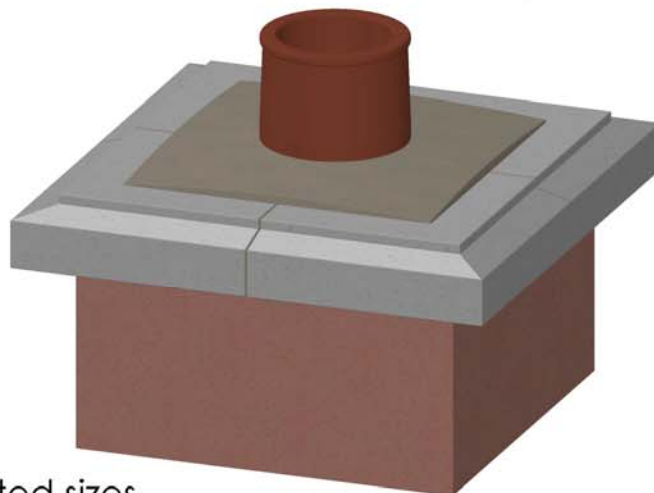
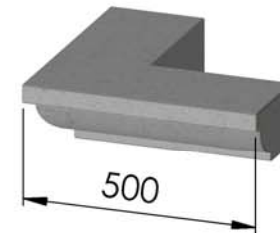
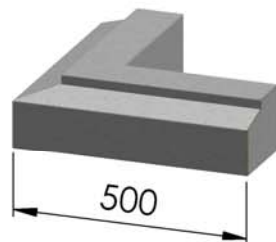
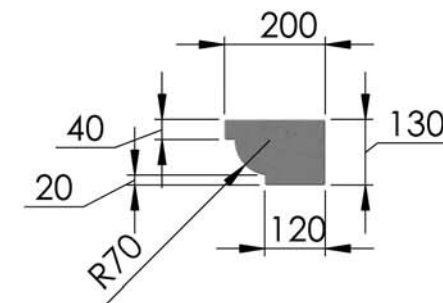
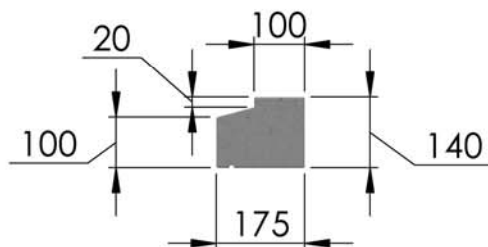
Date: 01/03/2017

Ref: SSC/GSC

Scale: 1:15

Drawn by: InGranite

Approximate weight: 42-48kgs/meter



All dimensions are in millimetres. For non listed sizes please contact InGranite Recon LTD.

All vertical faces typically have a 4mm taper per 100mm of height.

The information contained in this drawing was correct at the time of going to print. Profiles, sizes and weights are given as indication only.



InGranite Recon Ltd.

Reconstituted Stone | Modern Material | Classic Style

UK info@ingranite.co.uk

RoI info@ingranite.ie

www.ingranite.co.uk

www.ingranite.ie

0808 2349118

057 9331462

Technical specification sheet

Title: Standard string course

Date: 28/02/2017

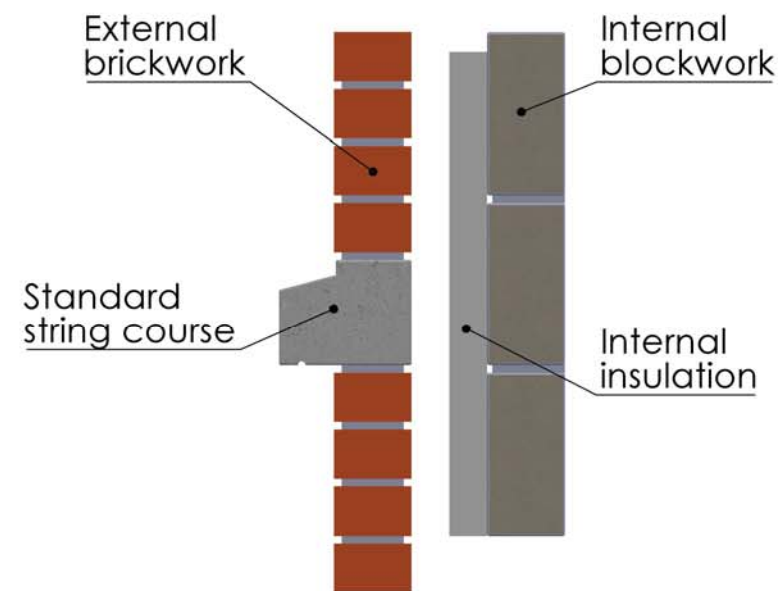
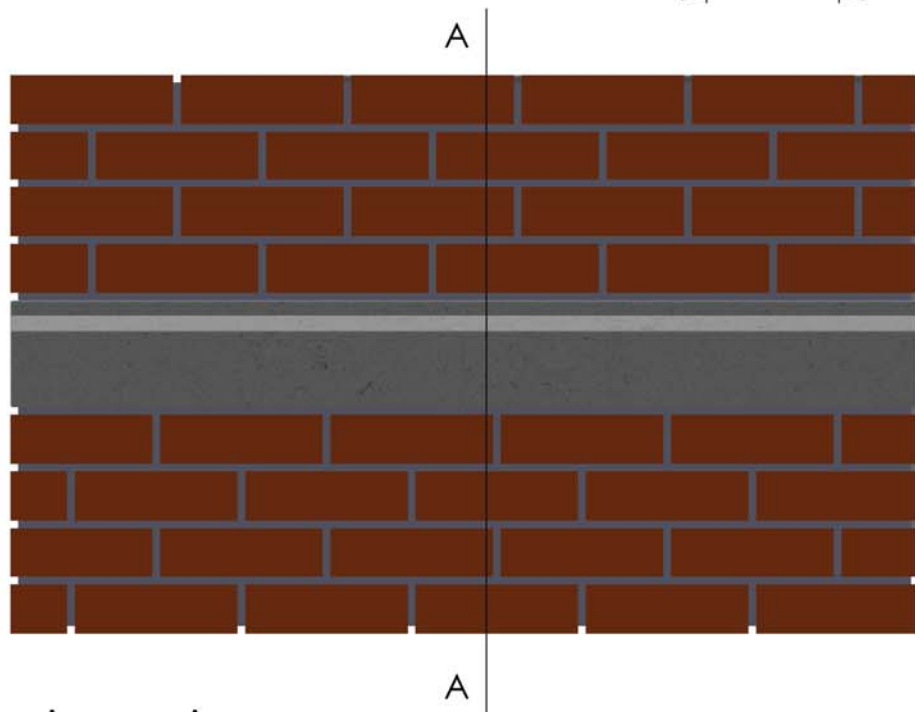
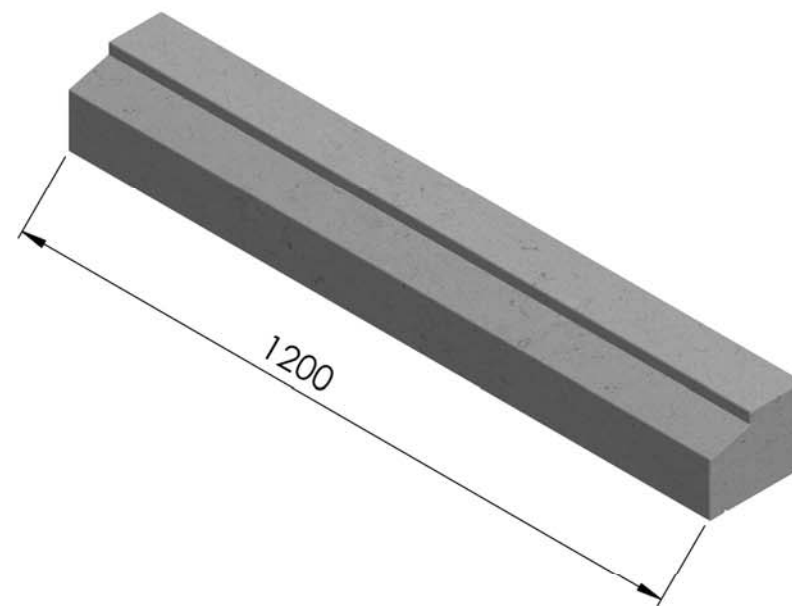
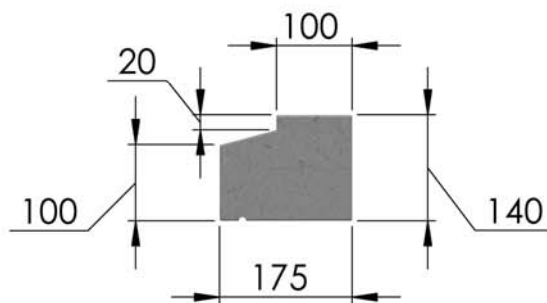
Ref: SSC 1200

Scale: 1:10

Drawn by: InGranite

Approximate weight:

48kgs



All dimensions are in millimetres. For non listed sizes please contact InGranite Recon LTD.

All vertical faces typically have a 4mm taper per 100mm of height.

The information contained in this drawing was correct at the time of going to print. Profiles, sizes and weights are given as indication only.

Section A-A



InGranite Recon Ltd.

Reconstituted Stone | Modern Material | Classic Style

UK info@ingranite.co.uk

www.ingranite.co.uk

0808 2349118

RoI info@ingranite.ie

www.ingranite.ie

057 9331462

Technical specification sheet

Title: Standard string course corners

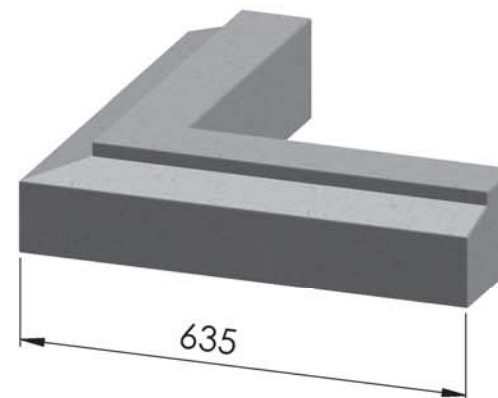
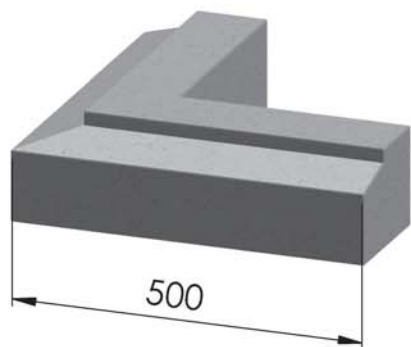
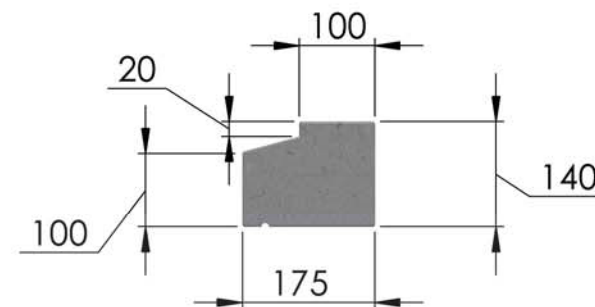
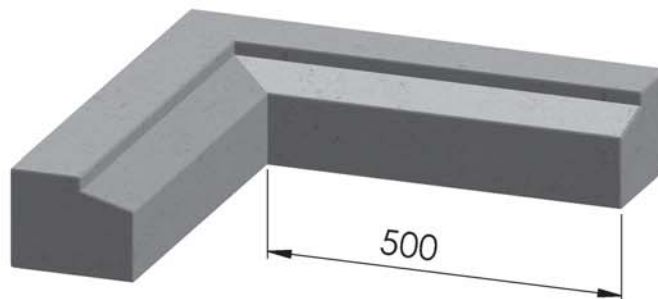
Date: 01/03/2017

Ref: ssce/ssci

Scale: 1:10

Drawn by: InGranite

Approximate weight: 50.5kgs/meter



All dimensions are in millimetres. For non listed sizes please contact InGranite Recon LTD.

All vertical faces typically have a 4mm taper per 100mm of height.

The information contained in this drawing was correct at the time of going to print. Profiles, sizes and weights are given as indication only.



InGranite Recon Ltd.

Reconstituted Stone | Modern Material | Classic Style

UK info@ingranite.co.uk

RoI info@ingranite.ie

www.ingranite.co.uk

www.ingranite.ie

0808 2349118

057 9331462

Technical specification sheet

Title: String course straight

Date: 20/02/2017

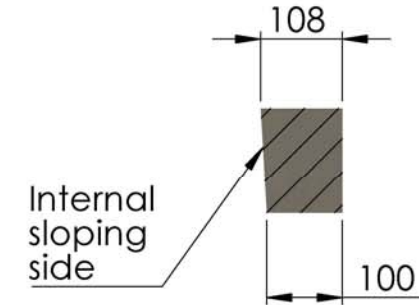
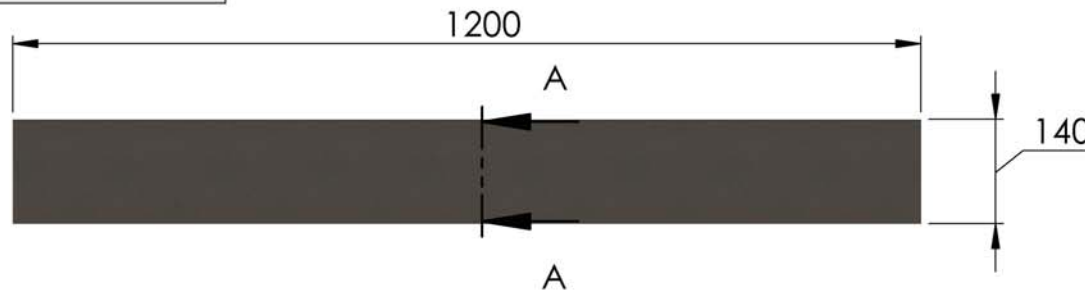
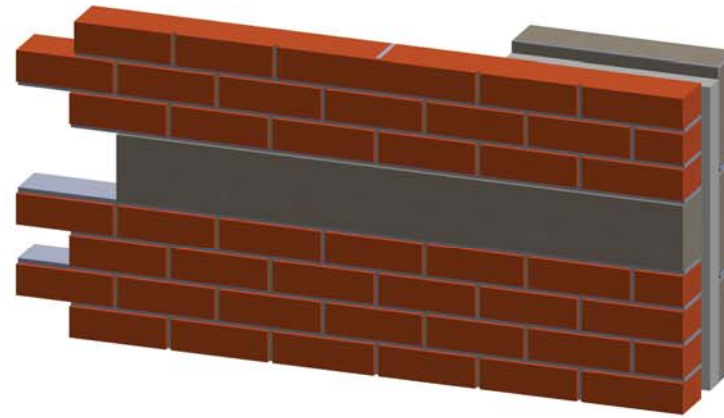
Ref: String course

Scale: 1:10

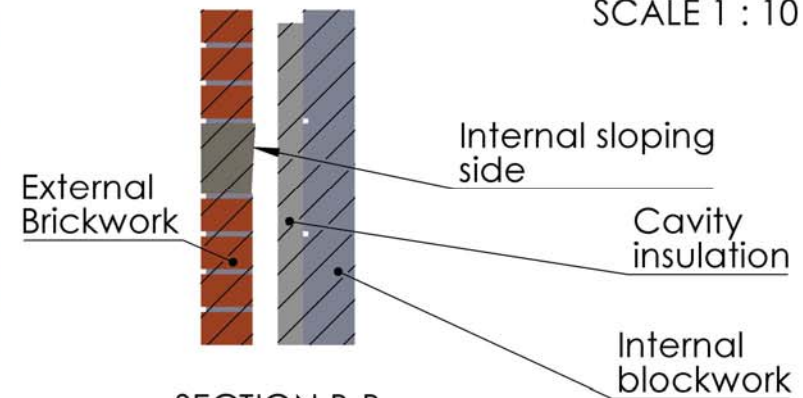
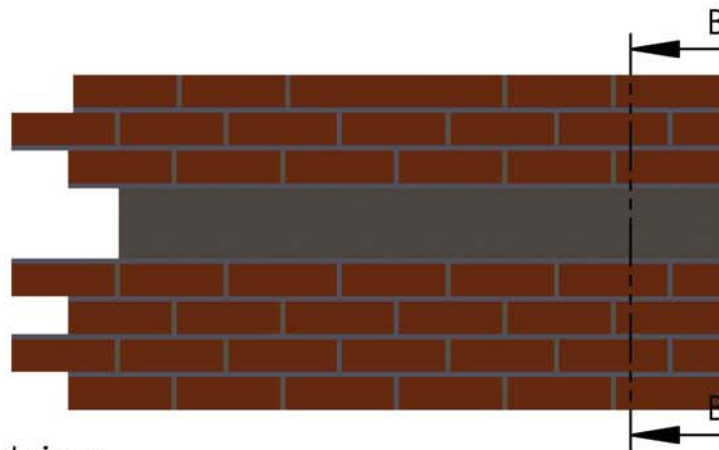
Drawn by: InGranite

Approximate weight:

17kgs/meter



SECTION A-A
SCALE 1 : 10



SECTION B-B
SCALE 1 : 15

All dimensions are in millimetres. For non listed sizes please contact InGranite Recon LTD.

All vertical faces typically have a 4mm taper per 100mm of height.

The information contained in this drawing was correct at the time of going to print. Profiles, sizes and weights are given as indication only.



InGranite Recon Ltd.

Reconstituted Stone | Modern Material | Classic Style

UK info@ingranite.co.uk

RoI info@ingranite.ie

www.ingranite.co.uk

www.ingranite.ie

0808 2349118

057 9331462

Technical specification sheet

Title: Castlehorn external carners

Date: 10/03/2017

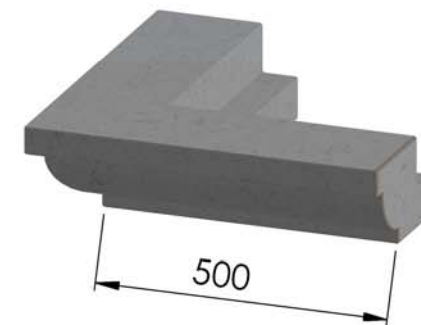
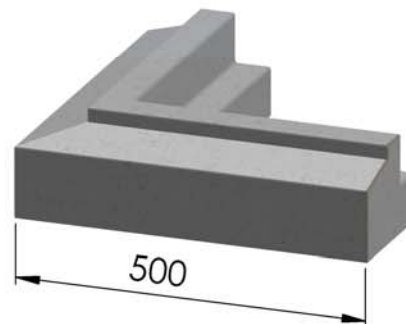
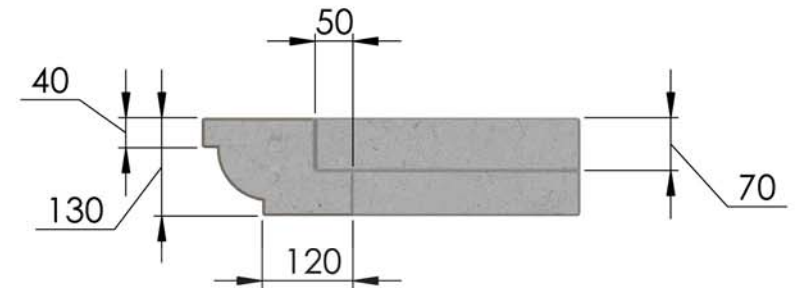
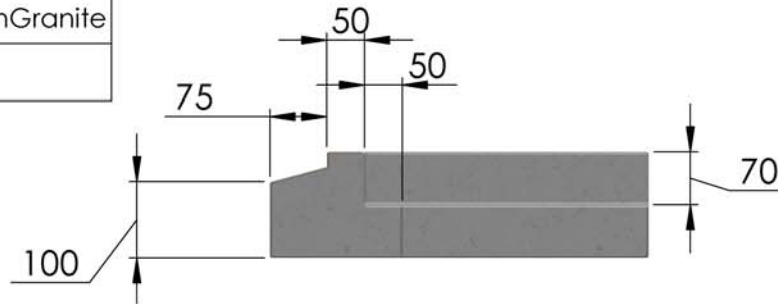
Ref: CEC500

Scale: 1:10

Drawn by: InGranite

Approximate weight:

50kgs



All dimensions are in millimetres. For non listed sizes please contact InGranite Recon LTD.

All vertical faces typically have a 4mm taper per 100mm of height.

The information contained in this drawing was correct at the time of going to print. Profiles, sizes and weights are given as indication only.